

SUZN QUILTS... Dresden Home

Day 6

"HOME"

Cutting



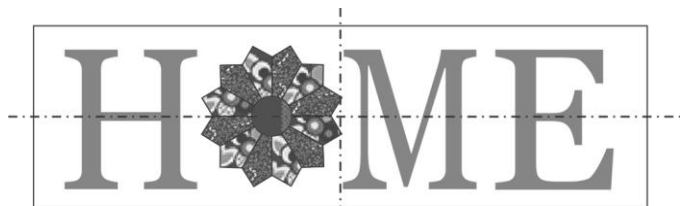
Cream (house) fabric #1

Cut 1 rec. 5 1/2" x 17 1/2".

Appliqué The "H" "M" & "E"

Trace "H", "M" & "E" (reversed for you), onto fusible web. Fuse to wrong side of brown fabric and cut out.

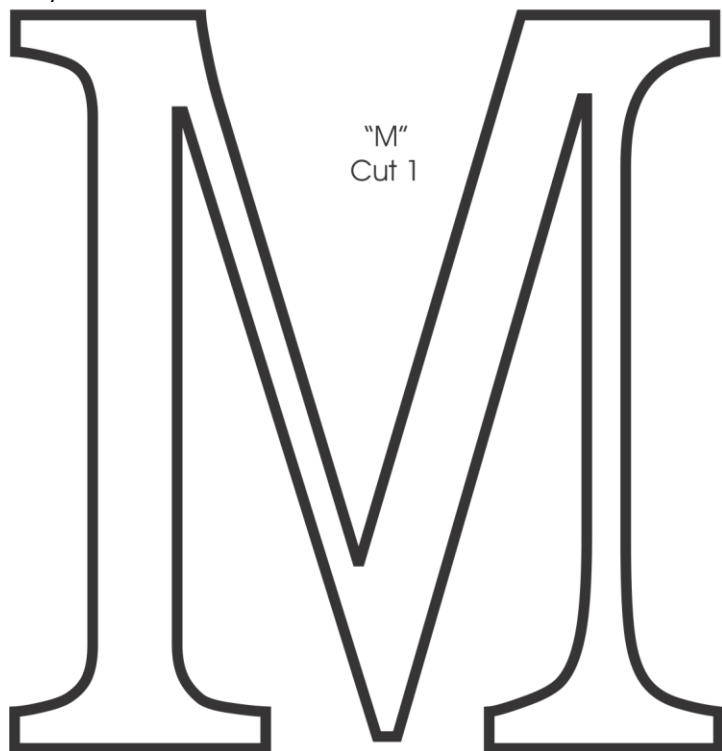
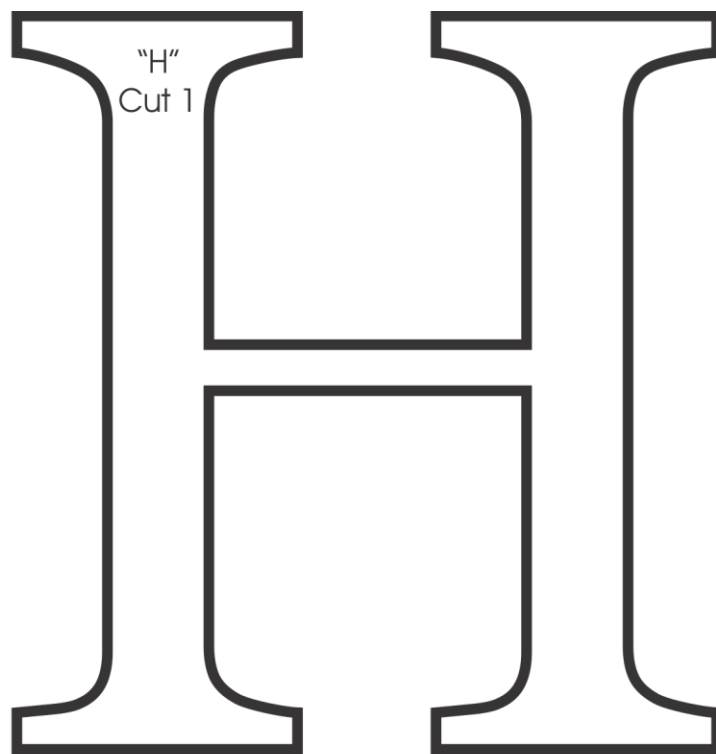
Press 5 1/2" x 17 1/2" cream rec. in half both directions to find center, then follow diagram below to align & fuse letters onto rec. and glue edge of Tiny Dresden plate in place.



Stitch around fused letters. Model was stitched using a machine buttonhole stitch.

Appliqué The Tiny Dresden Plate

Appliqué the Tiny Dresden plate the same way the center was stitched with thread matching to petals. Don't trim away the backing, it adds stability.



SUZN QUILTS...

copyright 2023© Susan R. Marth

Please do not share.

No part of this pattern may be copied for any reason.

Visit SuznQuilts.blog